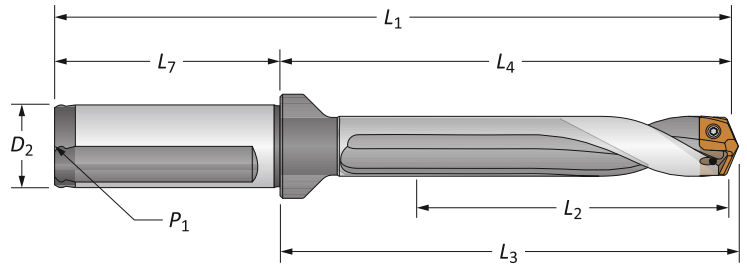


GEN3SYS XT Standard Drill Insert Holders

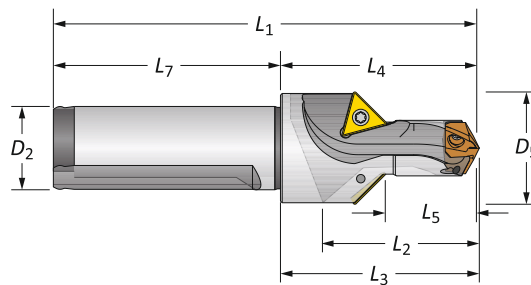
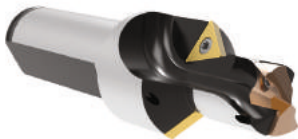
16 Series | Diameter Range: 0.6299" - 0.6692" (16.00mm - 16.99mm)



Straight and Helical

Flute	Length	Body				Shank				Flat	Part No.
		L ₂	L ₄	L ₃	L ₁	L ₇	D ₂	P ₁			
Straight	3xD	2	3-13/64	3-5/16	5-15/64	2-1/32	3/4	1/8	YES	60316S-075F	
	5xD	3-11/32	4-17/32	4-21/32	6-9/16	2-1/32	3/4	1/8	YES	60516S-075F	
	7xD	4-11/16	5-7/8	5-63/64	7-29/32	2-1/32	3/4	1/8	YES	60716S-075F	
Helical	Stub	13/16	2	2-7/64	4-1/32	2-1/32	3/4	1/8	YES	60116H-075F	
	3xD	2	3-13/64	3-5/16	5-15/64	2-1/32	3/4	1/8	YES	60316H-075F	
	3xD	2	3-13/64	3-5/16	5-15/64	2-1/32	3/4	1/8	NO	60316H-075C	
	5xD	3-11/32	4-17/32	4-21/32	6-9/16	2-1/32	3/4	1/8	YES	60516H-075F	
	5xD	3-11/32	4-17/32	4-21/32	6-9/16	2-1/32	3/4	1/8	NO	60516H-075C	
	7xD	4-11/16	5-7/8	5-63/64	7-29/32	2-1/32	3/4	1/8	YES	60716H-075F	
	7xD	4-11/16	5-7/8	5-63/64	7-29/32	2-1/32	3/4	1/8	NO	60716H-075C	
	Metric	3xD	50.8	81.3	84.2	131.3	50.0	20.0	1/8*	YES	60316S-20FM
5xD		85.0	115.1	118.2	165.1	50.0	20.0	1/8*	YES	60516S-20FM	
7xD		119.0	149.2	152.0	199.2	50.0	20.0	1/8*	YES	60716S-20FM	
Stub		21.0	50.8	53.7	100.8	50.0	20.0	1/8*	YES	60116H-20FM	
3xD		50.8	81.3	84.2	131.3	50.0	20.0	1/8*	YES	60316H-20FM	
3xD		50.8	81.3	84.2	131.3	50.0	20.0	1/8*	NO	60316H-20CM	
5xD		85.0	115.1	118.2	165.1	50.0	20.0	1/8*	YES	60516H-20FM	
5xD		85.0	115.1	118.2	165.1	50.0	20.0	1/8*	NO	60516H-20CM	
7xD		119.0	149.2	152.0	199.2	50.0	20.0	1/8*	YES	60716H-20FM	
7xD		119.0	149.2	152.0	199.2	50.0	20.0	1/8*	NO	60716H-20CM	

*Thread to BSP and ISO 7-1



Drill / Chamfer

Step	Body				Shank			Part No.	Chamfer Insert	
	D ₅	L ₅	L ₂	L ₄	L ₃	L ₁	L ₇			D ₂
Imperial	1-1/16	61/64	1-19/64	2	2-7/64	4-1/32	2-1/32	3/4	60116C45-075F	TCMT-110204
Metric	27.0	24.0	33.1	50.8	53.7	100.8	50.0	20.0	60116C45-20FM	TCMT-110204

Connection Accessories

Insert Screws	Nylon Locking Screws	Insert Driver	Preset Torque Hand Driver	Replacement Tips	Admissible Tightening Torque*
72556-IP8-1	72556N-IP8-1	8IP-8	8IP-8TL	8IP-8B	15.5 in-lbs (175 N-cm)

*Tightening torques are calculated with a friction coefficient of $\mu = 0.14$ and develop 90% of ultimate yield strength

Chamfer inserts sold separately in multiples of 10 | Screws sold in multiples of 10

ⓘ = Imperial (in)
Ⓜ = Metric (mm)