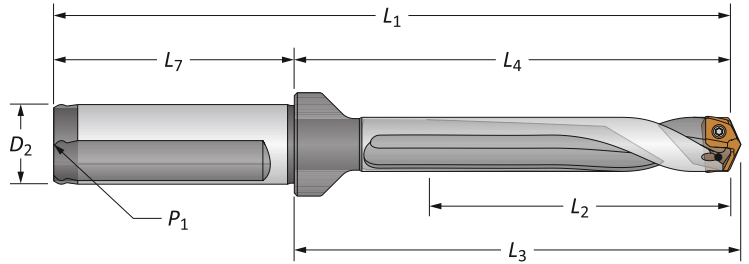


GEN3SYS XT Standard Drill Insert Holders

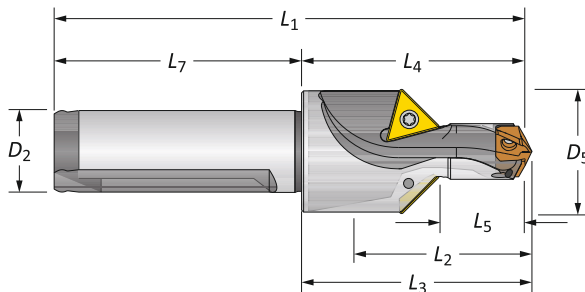
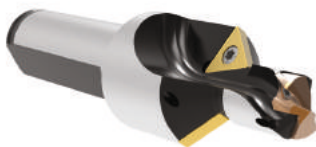
13 Series | Diameter Range: 0.5118" - 0.5511" (13.00mm - 13.99mm)



Straight and Helical

| Flute | Length | Body | | | | Shank | | | | Flat | Part No. |
|----------|----------|----------------|----------------|----------------|----------------|----------------|----------------|----------------|------|-------------|-------------|
| | | L ₂ | L ₄ | L ₃ | L ₁ | L ₇ | D ₂ | P ₁ | | | |
| Straight | 3xD | 1-21/32 | 2-23/32 | 2-13/16 | 4-3/4 | 2-1/32 | 3/4 | 1/8 | YES | 60313S-075F | |
| | 5xD | 2-3/4 | 3-13/16 | 3-29/32 | 5-27/32 | 2-1/32 | 3/4 | 1/8 | YES | 60513S-075F | |
| | 7xD | 3-55/64 | 4-59/64 | 5-1/64 | 6-61/64 | 2-1/32 | 3/4 | 1/8 | YES | 60713S-075F | |
| Helical | Stub | 5/8 | 1-11/16 | 1-25/32 | 3-23/32 | 2-1/32 | 3/4 | 1/8 | YES | 60113H-075F | |
| | 3xD | 1-21/32 | 2-23/32 | 2-13/16 | 4-3/4 | 2-1/32 | 3/4 | 1/8 | YES | 60313H-075F | |
| | 3xD | 1-21/32 | 2-23/32 | 2-13/16 | 4-3/4 | 2-1/32 | 3/4 | 1/8 | NO | 60313H-075C | |
| | 5xD | 2-3/4 | 3-13/16 | 3-29/32 | 5-27/32 | 2-1/32 | 3/4 | 1/8 | YES | 60513H-075F | |
| | 5xD | 2-3/4 | 3-13/16 | 3-29/32 | 5-27/32 | 2-1/32 | 3/4 | 1/8 | NO | 60513H-075C | |
| | 7xD | 3-55/64 | 4-59/64 | 5-1/64 | 6-61/64 | 2-1/32 | 3/4 | 1/8 | YES | 60713H-075F | |
| | 7xD | 3-55/64 | 4-59/64 | 5-1/64 | 6-61/64 | 2-1/32 | 3/4 | 1/8 | NO | 60713H-075C | |
| Metric | Straight | 3xD | 42.0 | 69.0 | 71.4 | 119.0 | 50.0 | 20.0 | 1/8* | YES | 60313S-20FM |
| | | 5xD | 69.9 | 96.8 | 99.2 | 146.8 | 50.0 | 20.0 | 1/8* | YES | 60513S-20FM |
| | | 7xD | 98.0 | 125.0 | 127.4 | 175.0 | 50.0 | 20.0 | 1/8* | YES | 60713S-20FM |
| | Helical | Stub | 16.0 | 43.0 | 45.2 | 93.0 | 50.0 | 20.0 | 1/8* | YES | 60113H-20FM |
| | | 3xD | 42.0 | 69.0 | 71.4 | 119.0 | 50.0 | 20.0 | 1/8* | YES | 60313H-20FM |
| | | 3xD | 42.0 | 69.0 | 71.4 | 119.0 | 50.0 | 20.0 | 1/8* | NO | 60313H-20CM |
| | | 5xD | 69.9 | 96.8 | 99.2 | 146.8 | 50.0 | 20.0 | 1/8* | YES | 60513H-20FM |
| | | 5xD | 69.9 | 96.8 | 99.2 | 146.8 | 50.0 | 20.0 | 1/8* | NO | 60513H-20CM |
| | | 7xD | 98.0 | 125.0 | 127.4 | 175.0 | 50.0 | 20.0 | 1/8* | YES | 60713H-20FM |
| | | 7xD | 98.0 | 125.0 | 127.4 | 175.0 | 50.0 | 20.0 | 1/8* | NO | 60713H-20CM |

*Thread to BSP and ISO 7-1



Drill / Chamfer

| | Step | | Body | | | | Shank | | Part No. | Chamfer Insert |
|----------|----------------|----------------|----------------|----------------|----------------|----------------|----------------|----------------|---------------|----------------|
| | D ₅ | L ₅ | L ₂ | L ₄ | L ₃ | L ₁ | L ₇ | D ₂ | | |
| Imperial | 1-1/64 | 49/64 | 1 | 1-11/16 | 1-25/32 | 3-23/32 | 2-1/32 | 3/4 | 60113C45-075F | TCMT-110204 |
| Metric | 25.8 | 19.5 | 25.4 | 43.0 | 45.2 | 93.0 | 50.0 | 20.0 | 60113C45-20FM | TCMT-110204 |

Connection Accessories

| Insert Screws | Nylon Locking Screws | Insert Driver | Preset Torque Hand Driver | Replacement Tips | Admissible Tightening Torque* |
|---------------|----------------------|---------------|---------------------------|------------------|-------------------------------|
| 7247-IP7-1 | 7247N-IP7-1 | 8IP-7 | 8IP-7TL | 8IP-7B | 7.4 in-lbs (84 N-cm) |

*Tightening torques are calculated with a friction coefficient of $\mu = 0.14$ and develop 90% of ultimate yield strength

Chamfer inserts sold separately in multiples of 10 | Screws sold in multiples of 10

ⓘ = Imperial (in)
Ⓜ = Metric (mm)