

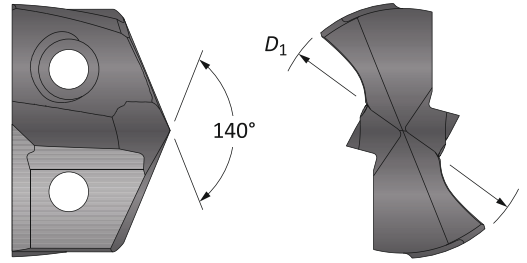
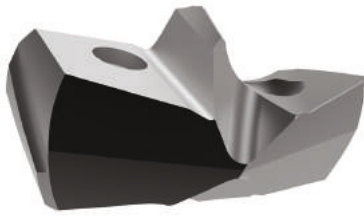


A

DRILLING

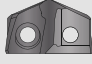
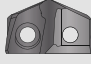
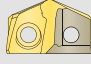
**GEN3SYS XT Pro Drill Inserts**

16 Series | Diameter Range: 0.6299" - 0.6692" (16.00mm - 16.99mm)



B

BORING

Fractional Equivalent	Insert				
	$D_1$ inch	$D_1$ mm	Part No. <b>P</b>	Part No. <b>K</b>	Part No. <b>N</b>
-	0.6299	16.00	XTP16-16.00	XTK16-16.00	XTN16-16.00
-	0.6331	16.08	XTP16-16.08	XTK16-16.08	XTN16-16.08
-	0.6378	16.20	XTP16-16.20	XTK16-16.20	XTN16-16.20
41/64	0.6406	16.27	XTP16-16.27	XTK16-16.27	XTN16-16.27
-	0.6457	16.40	XTP16-16.40	XTK16-16.40	XTN16-16.40
-	0.6496	16.50	XTP16-16.50	XTK16-16.50	XTN16-16.50
-	0.6535	16.60	XTP16-16.60	XTK16-16.60	XTN16-16.60
21/32	0.6563	16.67	XTP16-16.67	XTK16-16.67	XTN16-16.67
-	0.6614	16.80	XTP16-16.80	XTK16-16.80	XTN16-16.80
-	0.6654	16.90	XTP16-16.90	XTK16-16.90	XTN16-16.90

Inserts sold in multiples of 1

D

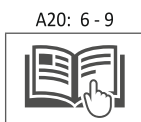
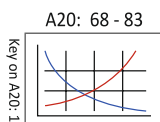
BURNISHING

F

THREADING

X

SPECIALS



Sizes not shown are available upon request.	
When ordering, please follow the example below:	
<b>Imperial:</b>	0.5180", Steel, 13 series = use Part No. <b>XTP13-13.16</b>
<b>Metric:</b>	13.16mm, Steel, 13 series = use Part No. <b>XTP13-13.16</b>