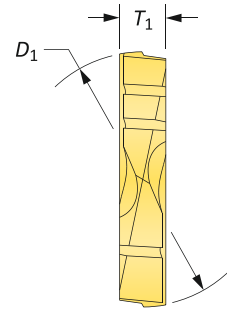
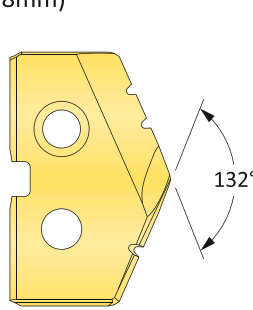
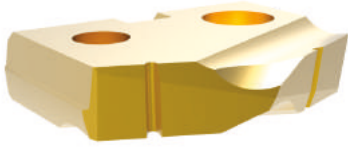
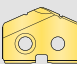
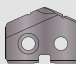
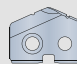


Original T-A Drill Inserts

1 Series | HSS | Diameter Range: 0.690" - 0.960" (17.53mm - 24.38mm)



HSS Inserts – Premium Cobalt

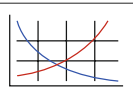
| Series | Fractional Equivalent | Insert | | | Part No. | | |
|--------|-----------------------|---------------------|-------------------|----------------|---|---|--|
| | | D ₁ inch | D ₁ mm | T ₁ |  TiN |  TiAlN |  TiCN |
| 1 | 45/64 | 0.7031 | 17.86 | 5/32 | 181T-703 | 181A-703 | 181N-703 |
| | - | 0.7087 | 18.00 | 5/32 | 181T-18 | 181A-18 | 181N-18 |
| | 23/32 | 0.7188 | 18.26 | 5/32 | 181T-0023 | 181A-0023 | 181N-0023 |
| | - | 0.7283 | 18.50 | 5/32 | 181T-18.5 | 181A-18.5 | 181N-18.5 |
| | 47/64 | 0.7344 | 18.65 | 5/32 | 181T-734 | 181A-734 | 181N-734 |
| | - | 0.7480 | 19.00 | 5/32 | 181T-19 | 181A-19 | 181N-19 |
| | 3/4 | 0.7500 | 19.05 | 5/32 | 181T-0024 | 181A-0024 | 181N-0024 |
| | 49/64 | 0.7656 | 19.45 | 5/32 | 181T-765 | 181A-765 | 181N-765 |
| | - | 0.7677 | 19.50 | 5/32 | 181T-19.5 | 181A-19.5 | 181N-19.5 |
| | 25/32 | 0.7813 | 19.84 | 5/32 | 181T-0025 | 181A-0025 | 181N-0025 |
| | - | 0.7874 | 20.00 | 5/32 | 181T-20 | 181A-20 | 181N-20 |
| | 51/64 | 0.7969 | 20.24 | 5/32 | 181T-796 | 181A-796 | 181N-796 |
| | - | 0.8010 | 20.34 | 5/32 | 181T-801 | 181A-801 | 181N-801 |
| | - | 0.8071 | 20.50 | 5/32 | 181T-20.5 | 181A-20.5 | 181N-20.5 |
| | 13/16 | 0.8125 | 20.64 | 5/32 | 181T-0026 | 181A-0026 | 181N-0026 |
| - | 0.8268 | 21.00 | 5/32 | 181T-21 | 181A-21 | 181N-21 | |
| 27/32 | 0.8438 | 21.43 | 5/32 | 181T-0027 | 181A-0027 | 181N-0027 | |
| - | 0.8465 | 21.50 | 5/32 | 181T-21.5 | 181A-21.5 | 181N-21.5 | |
| 1.5 | 55/64 | 0.8594 | 21.83 | 5/32 | 181T-859 | 181A-859 | 181N-859 |
| | - | 0.8661 | 22.00 | 5/32 | 181T-22 | 181A-22 | 181N-22 |
| | 7/8 | 0.8750 | 22.23 | 5/32 | 181T-0028 | 181A-0028 | 181N-0028 |
| | - | 0.8858 | 22.50 | 5/32 | 181T-22.5 | 181A-22.5 | 181N-22.5 |
| | 57/64 | 0.8906 | 20.62 | 5/32 | 181T-890 | 181A-890 | 181N-890 |
| | - | 0.9055 | 23.00 | 5/32 | 181T-23 | 181A-23 | 181N-23 |
| | 29/32 | 0.9063 | 23.02 | 5/32 | 181T-0029 | 181A-0029 | 181N-0029 |
| | 59/64 | 0.9219 | 23.42 | 5/32 | 181T-921 | 181A-921 | 181N-921 |
| | - | 0.9252 | 23.50 | 5/32 | 181T-23.5 | 181A-23.5 | 181N-23.5 |
| | 15/16 | 0.9375 | 23.81 | 5/32 | 181T-0030 | 181A-0030 | 181N-0030 |
| - | 0.9449 | 24.00 | 5/32 | 181T-24 | 181A-24 | 181N-24 | |

NOTE: 1.5 series inserts fit into both 1 and 1.5 series holders. However, 1 series inserts ONLY fit into 1 series holders. See page A30: 7 for visual.

A30: 112 - 143

A30: 52 - 56

A30: 4 - 6



HI, HR, CR, TC, SK,
NP, IN, RN, CN, AN,
BR, CI, CP, NC, WC

Coatings not listed above can be supplied as non-stocked standards. Process fees apply. →

| | |
|---------------------------------|--------------------|
| Inserts sold in quantities of 2 | |
| TiN = 181T-XXXX | TiAlN = 181A-XXXX |
| TiCN = 181N-XXXX | AM200® = 181H-XXXX |