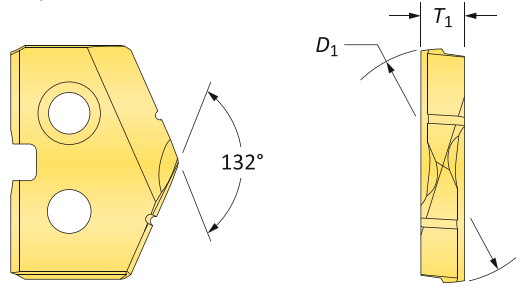

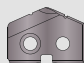
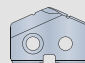


# Original T-A Drill Inserts

Z Series | HSS | Diameter Range: 0.437" - 0.510" (11.10mm - 12.95mm)



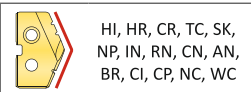
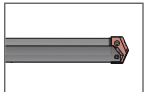
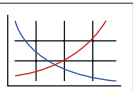
## HSS Inserts – Premium Cobalt

| Fractional Equivalent | Insert     |          |       | Part No.  |   |  |
|-----------------------|------------|----------|-------|---|---|--|
|                       | $D_1$ inch | $D_1$ mm | $T_1$ |  TiN |  TiAlN |  TiCN |
| 7/16                  | 0.4375     | 11.11    | 3/32  | <b>18ZT-0014</b>  | <b>18ZA-0014</b>  | <b>18ZN-0014</b>   |
| -                     | 0.4510     | 11.46    | 3/32  | <b>18ZT-.451</b>  | <b>18ZA-.451</b>  | <b>18ZN-.451</b>   |
| -                     | 0.4528     | 11.50    | 3/32  | <b>18ZT-11.5</b>  | <b>18ZA-11.5</b>  | <b>18ZN-11.5</b>   |
| 29/64                 | 0.4531     | 11.51    | 3/32  | <b>18ZT-.453</b>  | <b>18ZA-.453</b>  | <b>18ZN-.453</b>   |
| 15/32                 | 0.4688     | 11.91    | 3/32  | <b>18ZT-0015</b>  | <b>18ZA-0015</b>  | <b>18ZN-0015</b>   |
| -                     | 0.4724     | 12.00    | 3/32  | <b>18ZT-12</b>  | <b>18ZA-12</b>  | <b>18ZN-12</b>   |
| 31/64                 | 0.4844     | 12.30    | 3/32  | <b>18ZT-.484</b>  | <b>18ZA-.484</b>  | <b>18ZN-.484</b>   |
| -                     | 0.4921     | 12.50    | 3/32  | <b>18ZT-12.5</b>  | <b>18ZA-12.5</b>  | <b>18ZN-12.5</b>   |
| 1/2                   | 0.5000     | 12.70    | 3/32  | <b>18ZT-0016</b>  | <b>18ZA-0016</b>  | <b>18ZN-0016</b>   |
| -                     | 0.5060     | 12.85    | 3/32  | <b>18ZT-.506</b>  | <b>18ZA-.506</b>  | <b>18ZN-.506</b>   |
| -                     | 0.5100     | 12.95    | 3/32  | <b>18ZT-.510</b>  | <b>18ZA-.510</b>  | <b>18ZN-.510</b>   |

A30: 112 - 143

A30: 28 - 31

A30: 4 - 6



Coatings not listed above can be supplied as non-stocked standards. Process fees apply. →

|                         |                           |
|-------------------------|---------------------------|
| <b>TiN = 18ZT-XXXX</b>  | <b>TiAlN = 18ZA-XXXX</b>  |
| <b>TiCN = 18ZN-XXXX</b> | <b>AM200® = 18ZH-XXXX</b> |

Inserts sold in quantities of 2